

Radial blowers with EC internal-rotor motor

RG 148



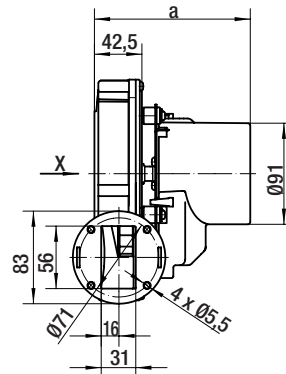
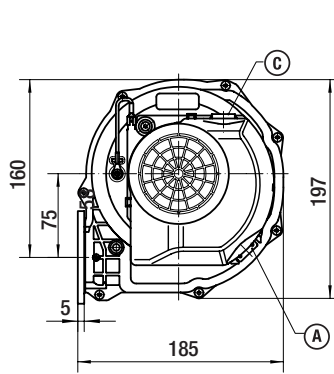
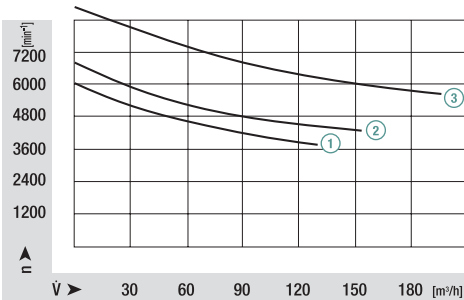
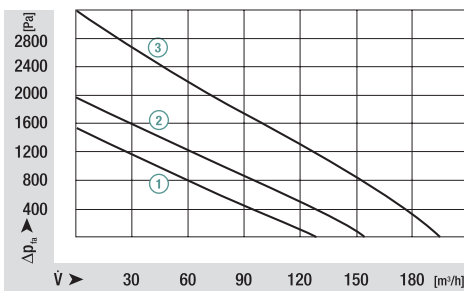
- die-cast aluminium housing
- brushless EC motor
- ball bearings
- motor anti-vibration mounted
- mounting position must be specified for corresponding support elements
- interfaces see page 85, no. 1/2

ebm-papst • Landshut

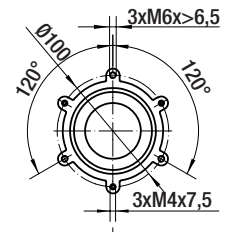
Nominal data	characteristic curve	rated voltage	frequency	max. air flow	max. pressure increase	max. power input	max. speed	electrical connection	mass	Dimensions mm
type		V	Hz	m ³ /h	Pa	W	min ⁻¹		kg	a1
RG148/1200-3612	①	24 DC	-	130	1600	50	6000	Ⓐ	1,6	108
RG148/1200-3612	②	230 AC	50	150	2000	80	6600	Ⓐ Ⓒ	1,6	121
RG148/1200-3633	③	230 AC	50	190	3200	135	8500	Ⓐ Ⓒ	1,9	145

bold print = standard type; subject to alterations

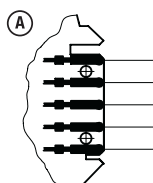
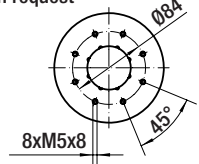
Characteristic curves



view X
Standard flange

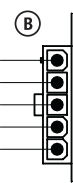


view X
Honeywell flange
on request

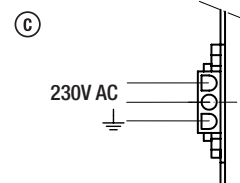


suitable for connector
AMP MT-Edge

Power supply+
Hall Sensor OUT
GND
PWM Input
Power supply-(GND)



suitable for connector
Molex Mini-Fit, Jr.



suitable for connector
AMP Universal MATE-N-LOK